

# CORNER RECORD

Document Number

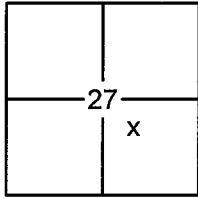
20140066

City of \_\_\_\_\_

County of

PLACER

, California

Brief Legal Description LOT 20, BLOCK H, ICE LAKES UNIT #2 SUBDIVISION, G/MAPS/1 O.R.P.C.

SEC. 27  
T. 17 N.  
R. 14 E.  
M.D.B. & M.

## CORNER TYPE

Government Corner  Control  
Meander  Property  
Rancho  Other  
Date of Survey 08/25/2014

## COORDINATES (OPTIONAL)

N. \_\_\_\_\_  
 E. \_\_\_\_\_  
Zone \_\_\_\_\_ Datum \_\_\_\_\_  
Elev. \_\_\_\_\_  
Vert. Datum: NGVD29  NAVD88   
Meas. Units: Metric  Imperial

CORNER- Left as Found  Found and Tagged  Established  Reestablished  Rebuilt

Identification and type of corner found: Evidence used to identify or procedure used to establish or reestablish the corner:

USED RECORD DIMENSIONS PER G/MAPS/1 O.R.P.C., FOUND MONUMENTS PER 16/CR/71 O.R.P.C., AND MONUMENTS OF NO RECORD IN RECORD POSITION, TO REESTABLISH THE MISSING CORNERS OF LOT 20, BLOCK H, AS SHOWN ON THE ACCOMPANYING PLAT.

A description of the physical condition of the monument as found and as set or reset:

- SET 5/8" REBAR WITH YELLOW PLASTIC CAP LS-7429  
 FOUND MONUMENT AS SHOWN ON PLAT  
 DIMENSION POINT (NOTHING FOUND OR SET)

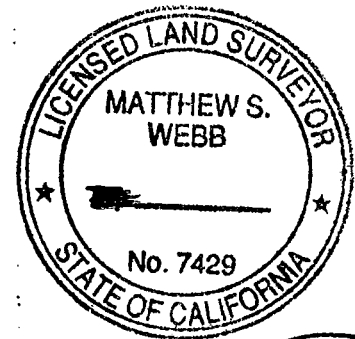
## SURVEYOR'S STATEMENT

This Corner Record was prepared by me or under my direction in conformance with the

Land Surveyors Act on

March 31, 2015

Signed

P.L.S. or R.C.E. No. 7429

## COUNTY SURVEYOR'S STATEMENT

This Corner Record was received \_\_\_\_\_

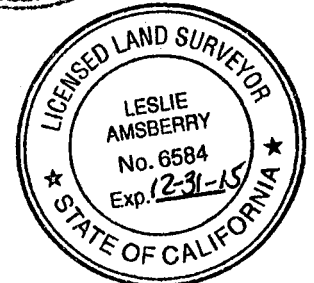
and examined and filed

April 29, 2015

Signed

P.L.S. or R.C.E. No. 6584

Title

County Surveyor

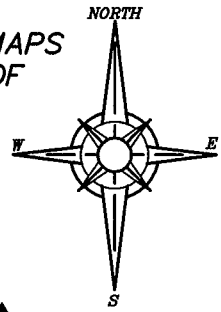
## COUNTY SURVEYOR'S COMMENT:

THE FILING OF THIS CORNER RECORD DOES NOT CONSTITUTE AGREEMENT WITH THE LOCATION SHOWN, OR RELINQUISHMENT OF ANY PORTION OF THE RIGHT-OF-WAY FOR YUBA DRIVE AS DEDICATED ON THE MAP ENTITLED ICE LAKES UNIT NO. 2 SUBD. FILED IN BOOK G OF MAPS AT PAGE 1 PLACER COUNTY OFFICIAL RECORDS

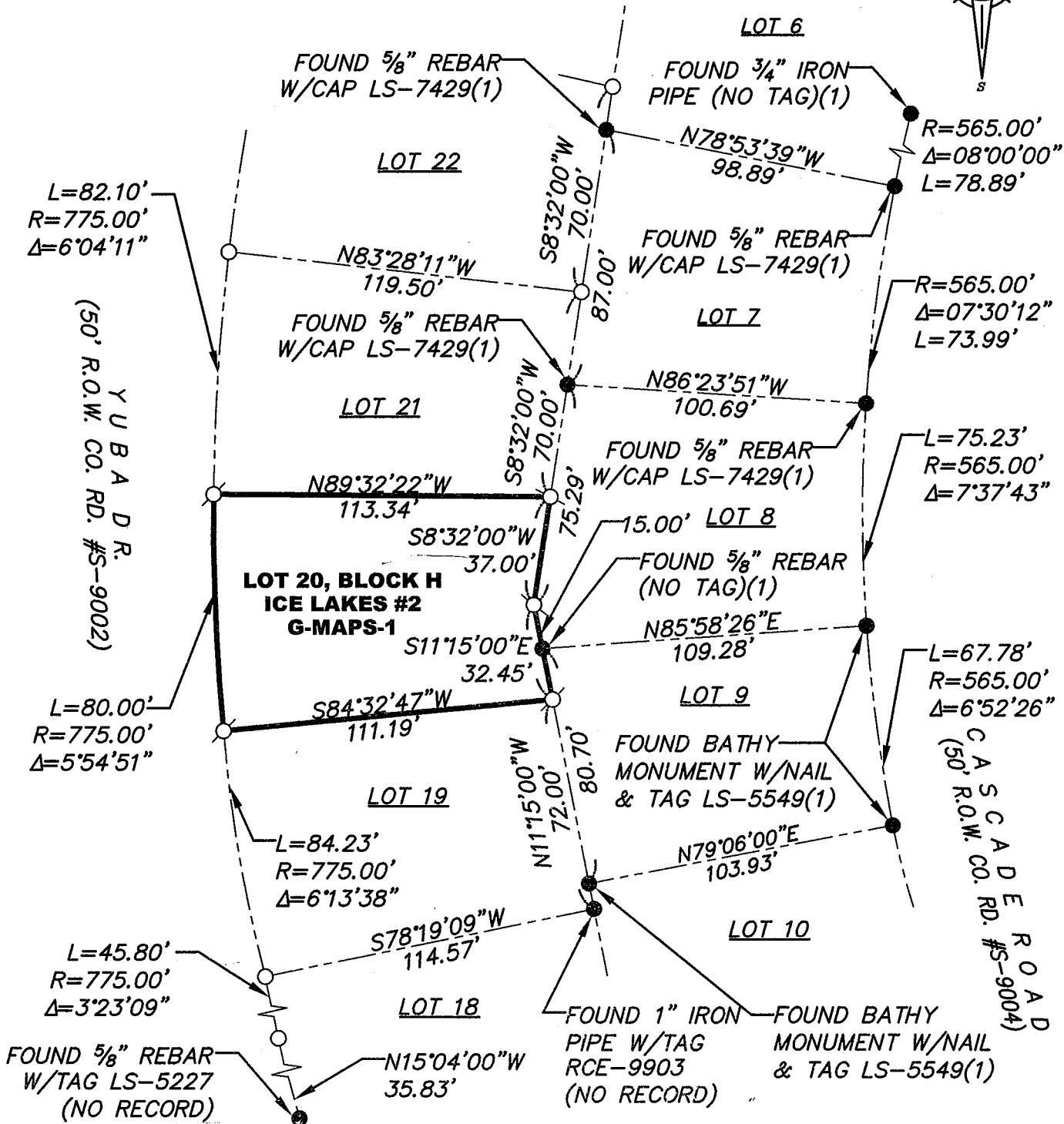
**PLAT OF SURVEY**

LOT 20, BLOCK H, ICE LAKES UNIT 2 SUBDIVISION, AS FILED BOOK G OF MAPS AT PAGE 1, OFFICIAL RECORDS PLACER COUNTY, CALIFORNIA. A PORTION OF SECTION 27, TOWNSHIP 17 N., RANGE 14 E., M.D.B. & M.

SCALE 1" = 50' DATE OF SURVEY 08/25/2014



BOOK 17 CORNER RECORDS PAGE 89



- FOUND MONUMENT AS NOTED
- DIMENSION POINT (NOTHING FOUND OR SET)
- SET 5/8" REBAR WITH PLASTIC CAP L.S. 7429 (UNLESS OTHERWISE NOTED)
- (1) PER 16/CR/71

J/N 2371.00