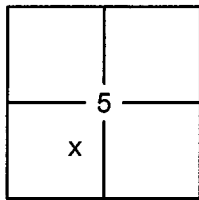


CORNER RECORD

Document Number 20140108

City of _____ County of PLACER, California

Brief Legal Description LOT 27, BEAR CREEK ASSOCIATION SUBDIVISION, H/MAPS/19 O.R.P.C.



SEC. 5
T. 15 N.
R. 16 E.
M.D.B. & M.

CORNER TYPE

Government Corner Control
 Meander Property
 Rancho Other
 Date of Survey 11/26/2014

COORDINATES (OPTIONAL)

N. _____
 E. _____
 Zone _____ Datum _____
 Elev. _____
 Vert. Datum: NGVD29 NAVD88
 Meas. Units: Metric Imperial

CORNER- Left as Found Found and Tagged Established Reestablished Rebuilt

Identification and type of corner found: Evidence used to identify or procedure used to establish or reestablish the corner:

USED RECORD DIMENSIONS PER H/MAPS/19 O.R.P.C., AND FOUND MOUNUMENTS PER 15/CR/70 O.R.P.C., TO REESTABLISH THE MISSING CORNERS OF LOT 27, AS SHOWN ON THE ACCOMPANYING PLAT.

A description of the physical condition of the monument as found and as set or reset:

- SET 5/8" REBAR WITH YELLOW PLASTIC CAP LS-7429
- FOUND MONUMENT AS SHOWN ON PLAT
- DIMENSION POINT (NOTHING FOUND OR SET)

SURVEYOR'S STATEMENT

This Corner Record was prepared by me or under my direction in conformance with the

Land Surveyors Act on March 31, 2015
 Signed [Signature] P.L.S. or R.C.E. No. 7429



COUNTY SURVEYOR'S STATEMENT

This Corner Record was received _____

and examined and filed April 29, 2015

Signed [Signature] P.L.S. or B.C.E. No. 6584
 Title County Surveyor



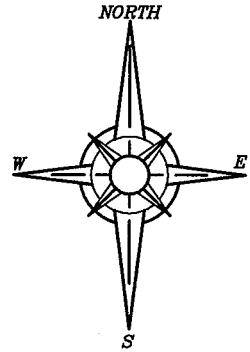
COUNTY SURVEYOR'S COMMENT:

BOOK 17 CORNER RECORDS PAGE 97

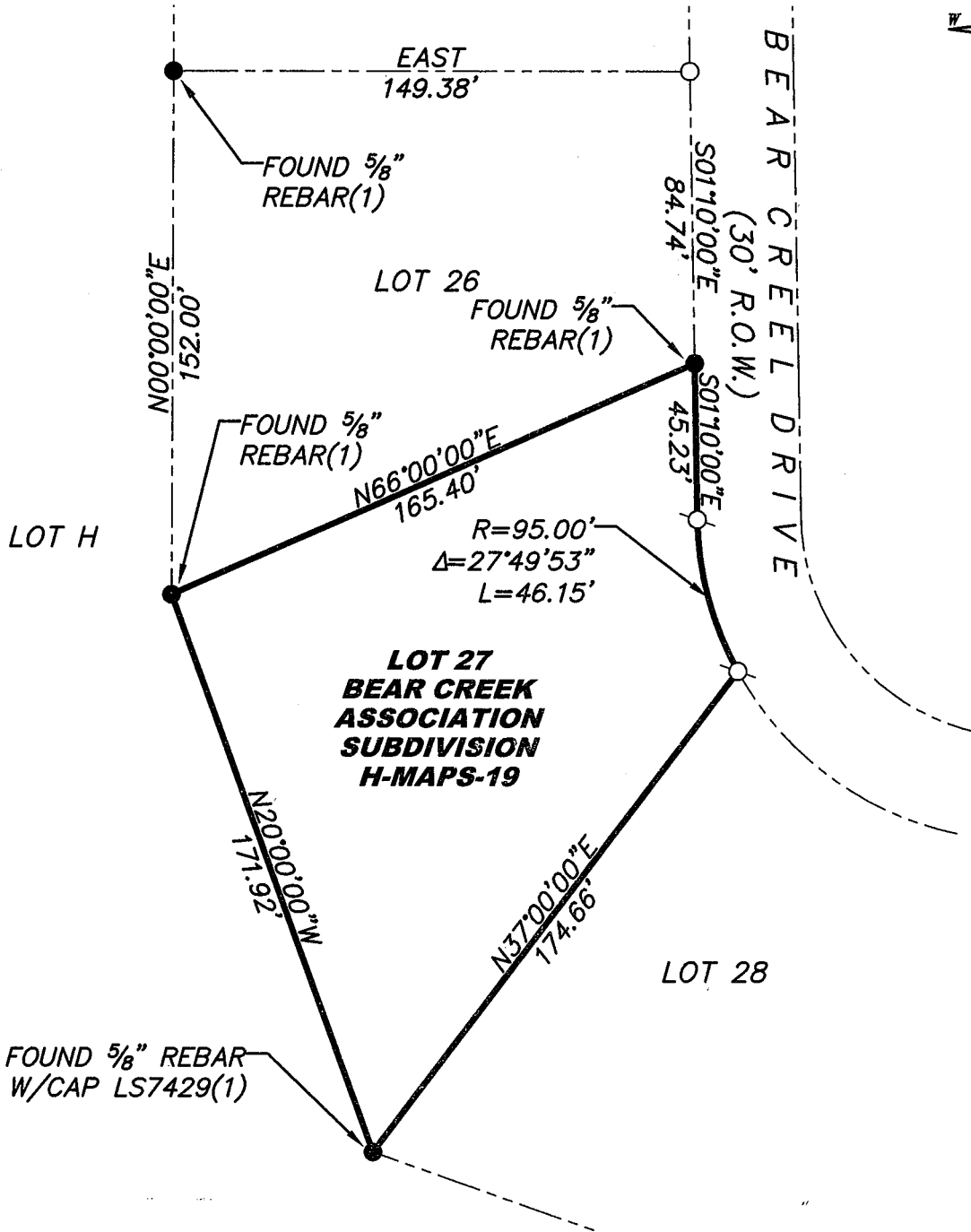
PLAT OF SURVEY

LOT 27, BEAR CREEK ASSOCIATION SUBDIVISION, BOOK H OF MAPS AT PAGE 19,
 OFFICIAL RECORDS PLACER COUNTY, CALIFORNIA. A PORTION OF SECTION 5,
 TOWNSHIP 15 N., RANGE 16 E., M.D.B. & M.

SCALE 1" = 50' DATE OF SURVEY 11/26/2014



BOOK 17 CORNER RECORDS PAGE 97



- FOUND MONUMENT AS SHOWN HEREON
- DIMENSION POINT (NOTHING FOUND OR SET)
- ⊗ SET 5/8" REBAR WITH YELLOW PLASTIC CAP L.S. 7429 UNLESS OTHERWISE NOTED
- (1) PER 15/CR/70

J/N 2087.00