

PLACER COUNTY SERVICE SYSTEMS
BY DEPARTMENT AND APPROPRIATION

ADMINISTRATION & FINANCIAL SYSTEM

Administrative Services

Administration
Information Technology
Telecommunication Services
Central Services

Assessor

Assessor Services

Auditor-Controller

Auditor-Controller

County Clerk-Recorder

Clerk-Recorder
Elections

County Counsel

County Counsel Services

County Executive Office

Administration / Public Information
Board of Supervisors
Clerk of the Board of Supervisors
Economic Development
Risk Management
Disaster Response and Recovery

Human Resources

Human Resources
Employee Benefits
Dental & Vision
Organizational Development
Unemployment
Workers Compensation

Treasurer-Tax Collector

Treasurer
Tax Collector
mPOWER

LAND USE SYSTEM

Agricultural Commissioner

Agricultural Commissioner / Sealer of Weights & Measures
Fish & Game Commission

Community Development / Resource Agency

Building Inspection

Building Permit Services

Engineering & Surveying

Land Development

Planning

Land Use Planning

Low & Moderate Income Housing Asset Fund

Community Development Housing

Public Works and Facilities

Administration
Building Maintenance
Eastern Regional Landfill
Engineering and Transportation
Environmental Utilities
Kings Beach Center
Road Maintenance
National Pollution Discharge Elimination System
Special Aviation
Fleet Operations
Placer County Government Center Campus
Placer County Transit
Property Management
Solid Waste Management
Tahoe Area Regional Transit

CAPITAL FACILITY PROJECTS

County Executive Office

Public Works and Facilities

COMMUNITY & CULTURAL SYSTEM

Farm Advisor

Farm Advisor Services

Library

Library Services

Public Works and Facilities

Parks and Grounds Services
Museum Operations

HEALTH & HUMAN SUPPORT SYSTEM

Child Support Services

Child Support Services

Health & Human Services

Adult Systems of Care
Children Systems of Care
Human Services
Client and Program Aid
Housing Authority
Public Health
Environmental Health
Animal Services
Medical Clinics

Veterans Services

Veterans Services

PUBLIC PROTECTION SYSTEM

County Executive Office

Emergency Services
Fire Services

CEO - Non-Departmental

Contribution to Public Safety
Criminal Justice CEO
Criminal Justice Other Programs

District Attorney

District Attorney Services

Probation

Juvenile Probation Services
Adult Probation Services
Food Services

Sheriff-Coroner-Marshall

Sheriff-Coroner-Marshall
Public Safety & Prevention
Corrections & Detention

FUNCTIONS BY DEPARTMENT AND APPROPRIATION
 As defined by the State Controller's Office
 Consistent with the Comprehensive Annual Financial Report (CAFR)

GOVERNMENTAL ACTIVITIES

GENERAL GOVERNMENT

Administrative Services

- Fund 100
 - Administration
- Fund 250
 - Telecommunication Services
 - Information Technology
 - Central Services

Assessor - Fund 100

Auditor-Controller

- Fund 100
 - Auditor-Controller
- Fund 190
 - Debt Service

Community Development / Resource Agency

- Fund 100
 - Engineering & Surveying

County Counsel - Fund 100

County Executive Office

- Fund 100
 - Board of Supervisors
 - Clerk of the Board of Supervisors
 - County Executive Office Administration
 - Economic Development
- Fund 270
 - General Liability Insurance

County Executive Office Non-Departmental

- Fund 100
 - Appropriation for Contingencies
 - Community and Agency Support
 - Contribution to Facilities and Infrastructure
 - Contribution to Debt Service

- Fund 145
 - Lake Tahoe Tourism and Promotions

- Fund 150
 - Open Space
- Fund 250
 - Countywide Systems
 - Countywide Radio Systems

Human Resources

- Fund 100
 - Human Resources
- Fund 250
 - Employee Benefits
- Fund 270
 - Dental & Vision
 - Unemployment
 - Workers Compensation

Public Works and Facilities

- Fund 100
 - Administration
 - Property Management
 - Placer County Government Campus
- Fund 250
 - Fleet Operations
 - Placer County Government Center Campus
 - Building Maintenance

Treasurer-Tax Collector - Fund 100

PUBLIC PROTECTION

Agricultural Commission/Sealer - Fund 100

Fish and Game - Fund 130

Community Development / Resource Agency

- Fund 100
 - Administration
 - Building Inspection
 - Planning Department

County Clerk-Recorder - Fund 100

County Executive Office

- Fund 100
 - Emergency Services
 - Disaster Response/Recovery
- Fund 170
 - County Fire

County Executive Office Non-Departmental

- Fund 100
 - Criminal Justice Other Programs
 - Contribution to Public Safety

- Fund 110
 - Criminal Justice CEO

District Attorney - Fund 110

Health and Human Services

- Fund 100
 - Animal Services

Probation

- Fund 110
 - Probation Officer
- Fund 250
 - Food Services

Public Works

- Fund 100
 - National Pollution Discharge Elimination System

Sheriff-Coroner-Marshal

- Fund 110
 - Grants Program
 - Tahoe Operations
 - Protection and Prevention
 - Administration and Support
 - Auburn/So. Placer Support Services
 - Jail Corrections and Detention

- Fund 111
 - Automated Mobile & Fixed Fingerprint
 - Placer Regional Auto Theft Task Force

Child Support Services - Fund 100

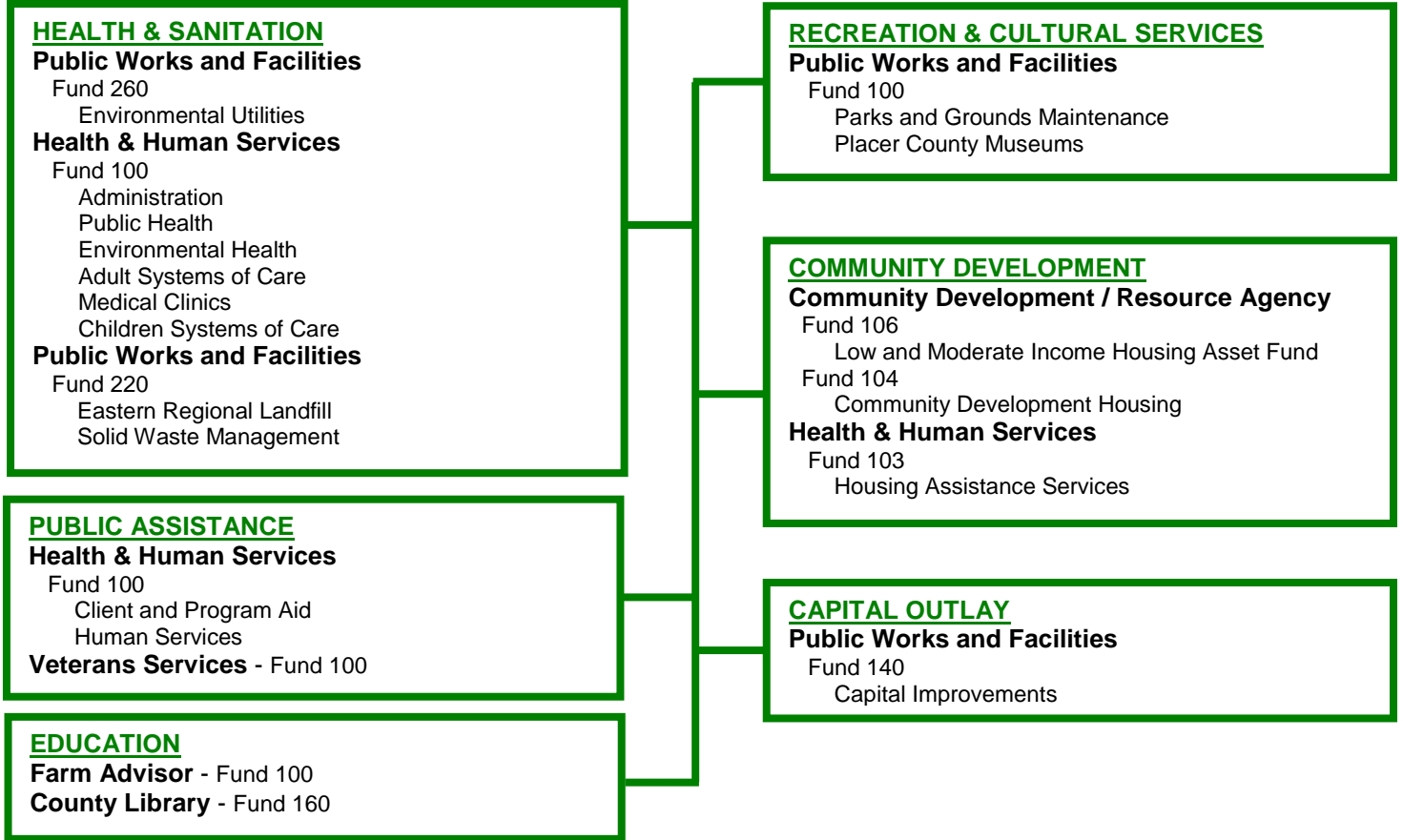
PUBLIC WAYS & FACILITIES

Public Works and Facilities

- Fund 107
 - Special Aviation
- Fund 120
 - Engineering and Transportation
 - Road Maintenance

FUNCTIONS BY DEPARTMENT AND APPROPRIATION
 As defined by the State Controller's Office
 Consistent with the Comprehensive Annual Financial Report (CAFR)

GOVERNMENTAL ACTIVITIES



BUSINESS-TYPE ACTIVITIES

(Relates to Enterprise Fund expenditures using the accrual basis of accounting)

