

**PLACER COUNTY DEPARTMENT OF  
PUBLIC WORKS AND FACILITIES  
PLACER COUNTY TRANSIT  
&  
TAHOE TRUCKEE AREA REGIONAL  
TRANSIT**



**PLACER COUNTY TRANSIT**  
*"We're going your way!"*



**TITLE VI CIVIL RIGHTS  
PROGRAM POLICY**

Approved by the Board of Supervisors on  
October 25, 2016

## TABLE OF CONTENTS

PURPOSE.....	1
STATEMENT OF POLICY.....	1
DESCRIPTION OF TRANSIT SERVICES.....	2
GENERAL REPORTING REQUIREMENTS.....	3
1) Annual Title VI Certifications and Assurances .....	3
2) Requirement to Prepare and Submit a Title VI Program.....	3
3) Requirement to Notify Beneficiaries of Protection Under Title VI.....	3
4) Title VI Complaint Procedures.....	3
5) Title VI Investigations, Complaints and Lawsuits.....	3
6) Requirement to Promote Inclusive Public Participation.....	4
7) Requirement to Provide Meaningful Access to Limited English Proficient (LEP) Persons .....	4
The Number of LEP persons eligible to be served or likely to be encountered.....	5
The frequency with which LEP individuals come into contact with the program.....	6
The nature and importance of the County's transit service to people's lives.....	6
Resources and Costs .....	7
Safe Harbor Provision.....	7
Table 1.0 .....	8
Limited English Proficiency Map	
Spanish/Tagalog.....	9
Existing Efforts to Provide Spanish Language Information .....	11
Upcoming Actions.....	11
Monitoring and Update of the LEP Program .....	11
Staff LEP Training .....	12
8) Minority Representation of Planning and Advisory Bodies.....	12
9) Providing Assistance to Sub-recipients .....	12
10) Monitoring of Sub-recipients .....	13
11) Determination of Site or Location of Facilities .....	13
12) Requirement to Provide Additional Information on Request .....	14
13) Requirements for Fixed Route Transit Providers .....	14
14) Summary of Public Outreach since last Title VI submittal .....	15
Attachment 1: Title VI Non-Discrimination Policy with Complaint Procedure .....	17
Attachment 2: List of Transit-Related Title VI Investigations, Complaints,& Lawsuits.....	23
Attachment 3: Public Participation Plan .....	24
Attachment A: Threshold for Civil Rights Programs.....	27
Attachment B: Sample Notice.....	28
Attachment 4: System-Wide Service Standards (Vehicle Load and Headway).....	29
Attachment 5: System-Wide Service Policies (Vehicle Assignment & Transit Amenities) .....	31
Attachment 6: Placer County Board of Supervisors Resolution No 2016-202 .....	32



PLACER COUNTY  
TRANSIT



## PLACER COUNTY DPWF/TRANSIT SERVICES TITLE VI PROGRAM POLICY

---

Placer County Department of Public Works and Facilities (DPWF)/Transit Services is committed to ensuring that no person is excluded from participation in, or denied the benefits of its transit services or programs on the basis of race, color or national origin as afforded under Title VI of the Civil Rights Act of 1964.

**Purpose:** The purpose of this policy is to establish guidelines to effectively monitor and ensure that Placer County's transit services is in compliance with all Federal Transit Administration (FTA) Title VI requirements in order to carry out the provisions of the Department of Transportation (DOT) Title VI Regulations at 49 CFR Part 21. This policy follows the requirements detailed in FTA Circular 4702.1B, "Title VI Requirements and Guidelines for Federal Transit Administration Recipients," dated October 1, 2012.

### **Statement of Policy:**

Placer County DPWF/Transit Services, as a federal grant recipient, is required by the FTA to conform to Title VI of the Civil Rights Act of 1964 and its amendments. Title VI of the Civil Rights Act of 1964 requires that no person in the United States, on the grounds of race, color or national origin be excluded from, be denied the benefits of, or be subjected to discrimination, under any program or activity receiving federal financial assistance. Presidential Executive Order 12898 addresses environmental justice in minority and low-income populations. Presidential Executive Order 13166 addresses services to those individuals with limited English proficiency.

The County is committed to enforcing the provisions of Title VI and protecting the rights and opportunities of all persons associated with the County or affected by its programs. The County's commitment includes vigorously enforcing all applicable laws and regulations that affect the County and those organizations, both public and private, which participate and benefit through our programs.

The County will take positive and realistic affirmative steps to ensure that all persons and/or firms wishing to participate in its programs are given an equal and equitable chance to participate.

The County's sub-recipients and contractors are required to prevent discrimination and ensure nondiscrimination in all of their programs, activities and services.

The Placer County Department of Public Works is responsible for providing leadership, direction and policy to ensure compliance with Title VI of the 1964 Civil Rights Act in respect to its transit services. Any person(s) who feels that they have been discriminated against is encouraged to report such violations in writing to the County's Risk Management office as described in Attachment #1.

## **Description of Transit Services:**

The Placer County Department of Public Works operates two separate transit systems within Placer County: Placer County Transit (PCT) and Tahoe Truckee Area Regional Transit (TART). PCT operates in western Placer County and TART operates in eastern Placer County.

### Placer County Transit (PCT)

PCT directly operates routes between 1) Alta, Colfax and Auburn, 2) Auburn and the Watt-I-80 Light Rail, 3) Dry Creek Road in North Auburn to Downtown Auburn, 4) Lincoln, Rocklin and Sierra College, 5) In July 2015 PCT took over full operation of the Lincoln Circulator. This route runs between 3<sup>rd</sup> and F in Lincoln, Ferrari Ranch area, and Twelve Bridges transfer point to other PCT services. There is an additional special school "tripper" that is available in the morning and afternoon.

PCT contracts Dial-A-Ride service and the Taylor Road Shuttle to MV Transportation (as of November 1, 2013). Dial-A-Ride provides service based on reservations directly to requested destinations within the service area. Dial-A-Ride is provided in Auburn in the Highway 49 Corridor, Loomis, Rocklin and Granite Bay. The Taylor Road Shuttle was established in 2001 to provide service to Newcastle, Penryn and Loomis from Auburn to Sierra College.

The Placer Commuter Express (PCE) was funded as a demonstration program, beginning in August of 2004, with Congestion Mitigation Air Quality (CMAQ) funds for the first two years, and it is now fully funded by local jurisdictions. This service provides four morning commute runs to downtown Sacramento and four return trips in the afternoon. The service begins in Colfax and stops at Clipper Gap, Auburn, Penryn, Loomis, Rocklin and Roseville. PCT provides the PCE service under contract to Amador Stage Lines for four runs

The Placer County Vanpool program is administered by PCT. The vanpools are leased from a private firm and driven by one of the commuters in the vanpool. Currently there are 10 vanpools originating from Placer County to various employers in Sacramento and Davis.

Tahoe Truckee Area Regional Transit (TART)

Tahoe Truckee Area Regional Transit is the public transportation service serving the southern and western areas of Placer County. The system is administered through the Transit Services division of the Placer County Public Works & Facilities Department. The Placer County TART program was rebranded in 2014 & 2015, along with the Town of Truckee’s transit program, into a single region wide Tahoe Truckee Area Regional Transit brand including a consistent public image (logo, signage, and bus paint scheme).

As of August 2016, Placer County TART fixed route services consist of the following:

The **Mainline Route** operates along the Lake Tahoe shoreline between Sugar Pine Point State Park (El Dorado County) and the Hyatt Regency in Incline Village (Washoe County, Nevada). Three buses are used to operate hourly service between Sugar Pine Point State Park and Crystal Bay, as well as half hourly service between Crystal Bay and the Hyatt. In summer, the half-hourly service is expanded west to Tahoe City through the operation of a fourth bus.

The **Highway 89 Route** provides hourly service between Tahoe City and Truckee using two buses. All runs serve stops at the Alpine Transportation Center (Deer Park) and in Squaw Valley at the Resort at Squaw Creek, the Clock Tower, and the Village at Squaw Valley.

The **Highway 267 Route** consists of two buses providing hourly service between Crystal Bay (Crystal Bay) and Truckee, via Northstar and the Truckee Airport. As of the beginning of the 2015/16 winter season, service will be provided year-round.

**General Reporting Requirements:**

Below are the requirements that all FTA recipients and sub recipients must follow to ensure that their programs, policies and activities comply with the DOT Title VI regulations. Placer County operates 21 vehicles in peak fixed route service. As such, this document will not include the Title VI requirements required for urbanized areas over 200,000 population operating 50 or more fixed route vehicles in peak service.

1) Annual Title VI Certifications and Assurances

Placer County must annually execute and submit the annual Certifications and Assurances. The document is submitted electronically through FTA’s TEAM web site. The Certifications and Assurances are executed by both the DPW designated official and the County Counsel office. Placer County also submits a paper version of the Certifications and Assurances to Caltrans Division of Mass Transit and Nevada DOT to fulfill the County’s requirement as a subrecipient of FTA 5311 funds.

2) Requirement to Prepare and Submit a Title VI Program

This program will be adopted by Resolution of the Placer County Board of Supervisors

3) Requirement to Notify Beneficiaries of Protection Under Title VI

In order to comply with 49 CFR Section 21.9(d), Placer County has provided information to the public regarding the County's Title VI obligations, and has apprized members of the public of protections against discrimination afforded to them by Title VI. The County has disseminated this information on the County's web site and on buses operated by Placer County. On occasion, this information will be printed and posted at key bus stop kiosks. This information is printed on the Countywide Transit Connections brochure. This information is included in Attachment 1 to this document.

#### 4) Title VI Complaint Procedures

Placer County developed a Title VI complaint procedure in December, 2009. The purpose of the complaint procedure is to provide the public with instructions on filing a civil rights complaint against Placer County's Transit services, and for investigating and tracking those complaints. The Placer County Title VI complaint procedure is included in Attachment 1.

#### 5) Title VI Investigations, Complaints and Lawsuits

Placer County is responsible for complying with 49 CFR Section 21.9(b) by preparing and maintaining a list of any active investigations conducted by entities other than FTA, lawsuits, or complaints naming the County that allege discrimination on the basis of race, color or national origin. The list shall include the date of the investigation, lawsuit, or complaint was filed; a summary of the allegation; the status of the investigation, lawsuit, or complaint; and actions taken by the County in response to the investigation, lawsuit or complaint. Placer County has had no Title VI complaints regarding transit services in the past three years as of September 1<sup>st</sup>, 2016.

#### 6) Requirement to Promote Inclusive Public Participation

Placer County's plan to promote inclusive public participation is shown in Attachment 3 of this document. Placer County ensures that minority and LEP populations, as with all members of the public, will be empowered to participate in decisions involved with the County's transit system.

#### 7) Requirement to Provide Meaningful Access to Limited English Proficient (LEP) Persons

Title VI and its implementing regulations require that FTA recipients take responsible steps to ensure meaningful access to the benefits, services, information and other important portions of their programs and activities for individuals who are Limited English Proficient (LEP).

#### Assessment of LEP Access

The US Department of Transportation (DOT) issued its Policy Guidance Concerning Recipients Responsibilities to LEP [Federal Register: December 14, 2005 (Volume 70, Number 239)]. This policy states that DOT recipients are required to take reasonable steps to ensure meaningful access to programs by LEP persons. There are four factors for agencies to consider when assessing language needs and determining what steps

they should take to ensure access for LEP persons, regardless of whether or not the agency chooses not to prepare a written LEP plan:

- 1) The number or proportion of LEP persons eligible to be served or likely to be encountered by a program, activity or service of the grantee;
- 2) The frequency with which LEP individuals come into contact with the program;
- 3) The nature and importance of the program, activity, or service provided by the recipient to people’s lives; and
- 4) The resources available to the recipient and costs.

The number of LEP persons eligible to be served or likely to be encountered

The non-English language that Placer County Transit Services needs to address is Spanish. According to the 2010-2014 American Community Survey for Placer County 16,916, or 5.0% of the County’s population speak English less than “very well”. 49% of that population is Spanish speaking. The remaining 51% are a large variety of Indo-European, Asian and Pacific and other languages. These numbers, as well as our experience, show that Spanish is the one non-English language that Placer County needs to address for the purposes of LEP requirements. Spanish speaking persons who are identified as speaking English less than “very well” represent 2.4% of Placer County’s population, compared to 12.6% statewide in California.

**Summary of Limited English Proficiency Statistics**

	California	Placer County
Total Population	35,545,621	341,087
Population Speaking English Less Than Very Well - Percent	19.1%	5.0%
Spanish Speaking Population Speaking English Less Than Very Well - Percent	12.6%	2.4%
Source: U.S. Census Bureau American Community Survey 5-Year Estimates. 2010-2014 for Placer County; 2010-2014 for California		

In February/March of 2016 and August of 2016, an on-board survey was conducted on Tahoe Truckee Area Regional Transit. The survey form was offered in both English and Spanish. For the February/March survey 15% of the

forms were returned in Spanish. During the August 2016 survey, 13% of the forms were returned in Spanish.

### The frequency with which LEP individuals come into contact with the program

Placer County assumes that the LEP individuals are regular users of the transit services provided by Placer County. At Placer County Transit, we observe relatively little interaction with Spanish speaking individuals to the point of language being a barrier to use of the service. As noted above, 13-15% of the survey respondents used a Spanish survey form. Based on observed interaction with the public in the field, our Tahoe Truckee Area Regional Transit (TART) operation serves Spanish speaking individuals daily. 1,673 out of 9,173, or 18.2%, of the 2014 Census population in Tahoe Census Designated Places within Placer County is Hispanic or Latino which supports our observations. However, at Lake Tahoe, much of the ridership, particularly during the winter ski season, are temporary residents that are not necessarily counted in the Census.

### The nature and importance of the County's transit service to people's lives

This assessment makes the assumption the transit service is important to people's lives. Section IV the DOT Policy Guidance Concerning Recipients Responsibilities to LEP Persons lists "Public transportation passengers" as an example of persons who are served or encountered by DOT recipients and should be considered when planning language services.



### Resources and Costs

Given the relatively small amount of LEP persons encountered in day to day service, there has not been significant investment in Spanish language materials.

### Safe Harbor Provision:

The Safe Harbor Provision was created to provide access to vital documents in a written format for non-English users who because of small numbers may not meet the threshold for providing more expansive language access services. Safe Harbor requires at a minimum a written translation of vital documents for each group that meets the LEP language threshold (5 percent or 1,000 individuals, whichever is less).

Placer County Transit evaluated the 2010-2014 American Community Survey “Language Spoken at Home” data to determine if any language exceeds the Safe Harbor Threshold for Placer County. This was determined by dividing the population estimate for a language group that “speaks English less than very well” by the total population of the County. The Safe Harbor Threshold provision stipulates that for each group that meets the LEP language threshold (5 percent or 1,000 individuals (whichever is less) PCT must provide translation of vital documents in written format for the non-English users. As demonstrated in Table 1.0 Spanish and Tagalog are the two languages that fall into the Safe Harbor Provision, this requires written translation of vital documents. Spanish speakers who are identified as speaking English less than “very well” comprise of 8,304 people. Tagalog speakers who are identified as speaking English less than “very well” comprise of 1,659 people.

### Safe Harbor Outreach:

- ◆ Placer County will take the initiative to contact Interpretation and Translations services to accurately translate Spanish and Tagalog for Rider Information.
- ◆ Provide translation of Spanish and Tagalog for the Title VI Civil Rights Program Policy, and Title VI Notice to Public Complaint Form/Procedures.
- ◆ Ensure public is aware of language services available by providing notices posted at Placer County Transit Office at 11432 F Ave., Auburn, CA 95603.

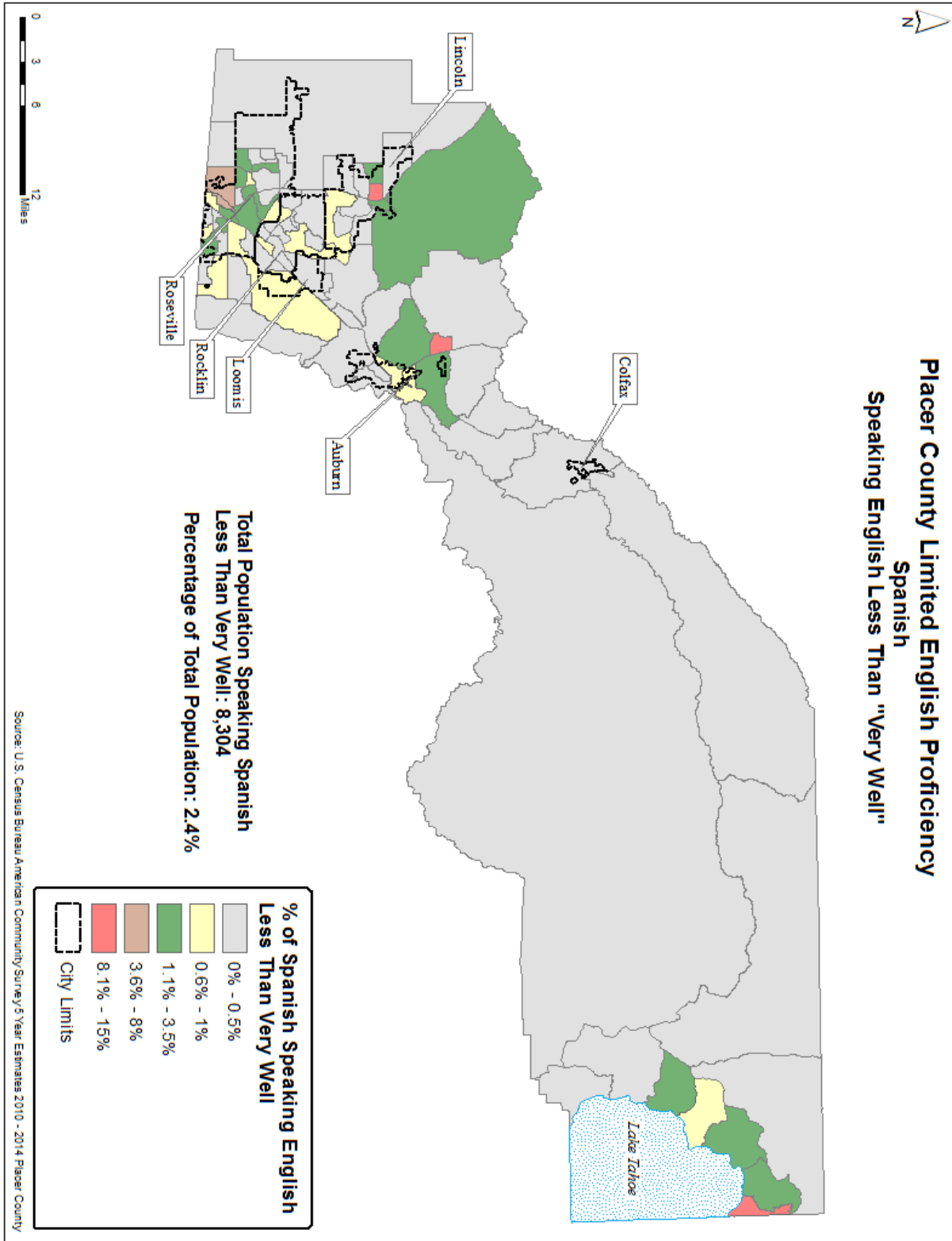
Based on the significant number of Spanish speakers there will be more materials translated to the Spanish language, comparable to what has been done in the previous plan.

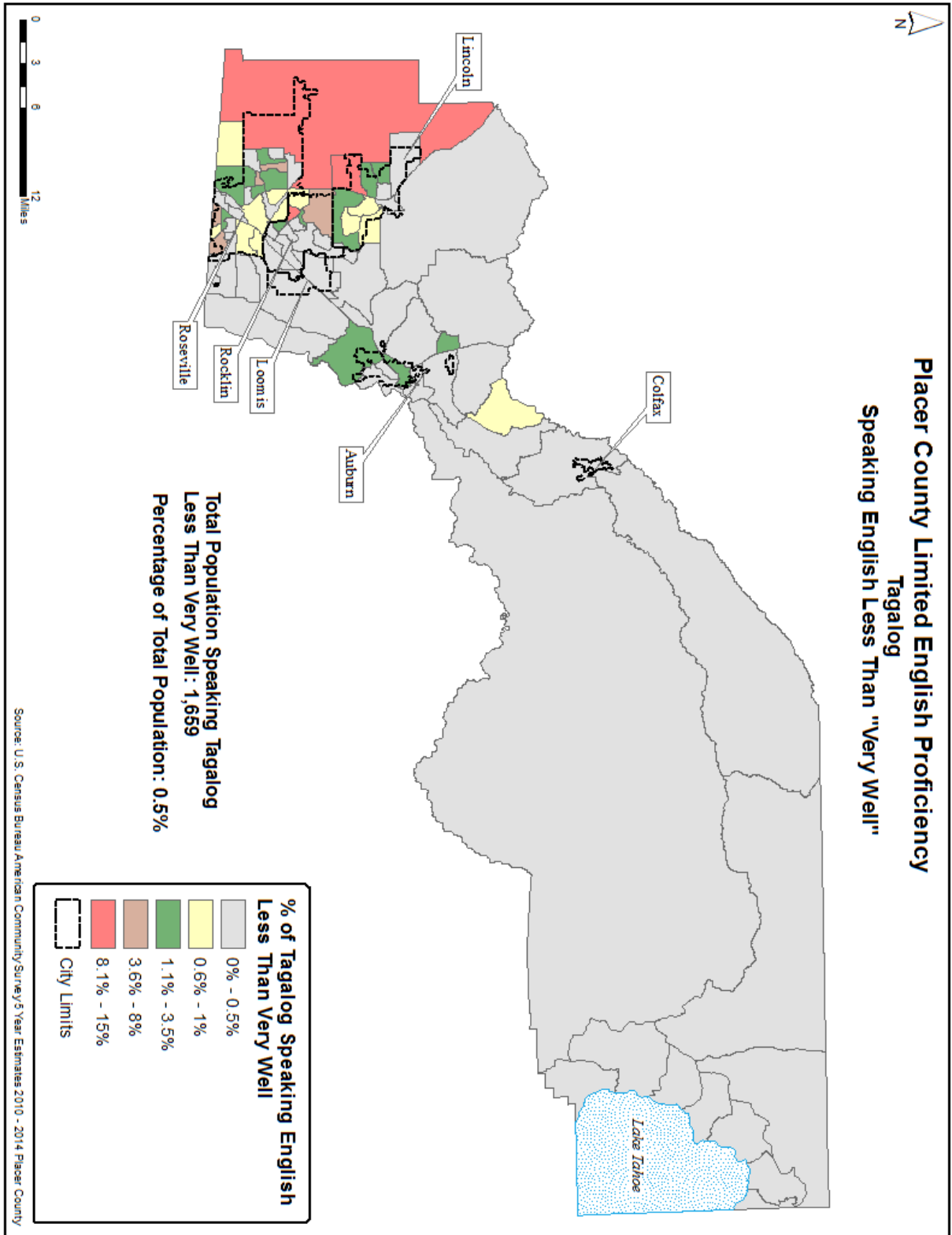
**Table 1.0**

<b>Detail of Limited English Proficiency Statistics: Placer County ACS 2010-2014</b>						
<b>Placer County, California</b>	<b>Population</b>	<b>Percent of Total Population</b>	<b>Speaks Only English</b>	<b>Speaks English Very Well</b>	<b>Speaks English Less Than Very Well</b>	<b>Percent Less Than Very Well</b>
<b>Total</b>	341,087	100.0%	290,229	33,942	33,942	5.0%
Spanish or Spanish Creole	23,467	6.9%		15,163	8,304	2.4%
All Other Languages Total	27,391	8.0%		18,779	8,612	2.5%
French (incl. Patois, Cajun)	1,480	0.4%		1223	257	0.1%
French Creole	37	0.0%		37	0	0.0%
Italian	830	0.2%		693	137	0.0%
Portuguese or Portuguese Creole	759	0.2%		467	292	0.1%
German	1,531	0.4%		1294	237	0.1%
Yiddish	23	0.0%		10	13	0.0%
Other West Germanic languages	290	0.1%		257	33	0.0%
Scandinavian languages	300	0.1%		300	0	0.0%
Greek	163	0.0%		163	0	0.0%
Russian	2,689	0.8%		1796	893	0.3%
Polish	135	0.0%		85	50	0.0%
Serbo-Croatian	139	0.0%		106	33	0.0%
Other Slavic languages	817	0.2%		527	290	0.1%
Armenian	94	0.0%		52	42	0.0%
Persian	1,754	0.5%		1276	478	0.1%
Gujarati	328	0.1%		200	128	0.0%
Hindi	594	0.2%		428	166	0.0%
Urdu	110	0.0%		83	27	0.0%
Other Indic languages	1,670	0.5%		1181	489	0.1%
Other Indo-European languages	782	0.2%		451	331	0.1%
Chinese	2,035	0.6%		1237	798	0.2%
Japanese	754	0.2%		468	286	0.1%
Korean	1,024	0.3%		323	701	0.2%
Mon-Khmer, Cambodian	100	0.0%		19	81	0.0%
Hmong	236	0.1%		164	72	0.0%
Thai	188	0.1%		73	115	0.0%
Laotian	73	0.0%		73	0	0.0%
Vietnamese	1,001	0.3%		629	372	0.1%
Other Asian languages	715	0.2%		621	94	0.0%
Tagalog	4,832	1.4%		3173	1659	0.5%
Other Pacific Island languages	693	0.2%		358	335	0.1%
Navajo	0	0.0%		0	0	0.0%
Other North American Languages	44	0.0%		44	0	0.0%
Hungarian	202	0.1%		202	0	0.0%
Arabic	693	0.2%		509	184	0.1%
Hebrew	82	0.0%		69	13	0.0%
African languages	88	0.0%		88	0	0.0%
Other and unspecified languages	106	0.0%		100	6	0.0%

Source: U.S. Census Bureau American Community Survey 5-Year Estimates, 2010-2014 for Placer County

The highlighted cells meet the criteria of the Safe Harbor Provision per LEP language threshold (5% or 1,000 individuals whichever is less





### Existing Efforts to Provide Spanish Language Information

- ♦ Placer County currently provides the TART system map and brochure in both Spanish and English.
- ♦ The South Placer Transit Information Center, which was implemented in May of 2011, includes a Spanish language option to obtain transit information and to book rides on demand response services.
- ♦ The Nextbus website providing predicted arrival times for Tahoe Truckee Area Regional Transit is available in Spanish.
- ♦ Unmet transit needs workshop notices are posted in both English and Spanish on buses and at bus stops.
- ♦ Key service advisories and notices have been published in Spanish.
- ♦ Placer County provides a 5% pay increase incentive for employees who are able to contribute to their duties with written and verbal bi-lingual fluency.
- ♦ Placer County has hired key office personnel in the Tahoe office fluent in Spanish to assist with Spanish speaking callers and English-Spanish translation of service advisories.
- ♦ Key information available on the County web site will continue be translated and published in Spanish.

### Upcoming Actions

- ♦ Implementing the Nextbus website for Placer County Transit services, to be completed winter of 2016.
- ♦ Implementing Google Maps Transit services for Placer County Transit which will provide accessibility to stops, route, and schedule information in dozens of languages.
- ♦ Placer County is in the process of redesigning the PCT schedule and service guide. This effort will be produced in Spanish as well as English.

### Monitoring and Update of the LEP Program

Placer County will monitor the request for language translation and adjust practices to meet demand while maintaining a basic level of access by LEP populations to key programs, services, materials and documents. In addition, Placer County obtains ongoing feedback from community based groups, stakeholder organizations, individuals and local agency and transit staff and makes changes based on the various feedback received.

Placer County will review the need for a formal LEP plan when data from the 2020 U.S. Census becomes available, or when it is evident that higher concentrations of LEP persons are present in Placer County.

### Staff LEP Training

Placer County trains staff likely to come in contact with LEP individuals to use tools to assist communicating Placer County programs and services (for example: phone calls from LEP individuals or walk-in LEP customers).

### 8) Minority Representation on Planning and Advisory Bodies

Title 49 CFR Section 21.5(b)(1)(vii) states that a recipient may not, on the grounds of race, color, or national origin, “deny a person the opportunity to participate as a member of a planning, advisory, or similar body which is an integral part of the program.” Recipients that have transit-related, non-elected planning boards, advisory councils or committees, or similar committees, the membership of which is selected by the recipient, must provide a table depicting the racial breakdown of the membership of those committees, and a description of efforts made to encourage the participation of minorities on such committees. Placer County does not have a non-elected transit board or advisory council. In the event that such a board was established, the County would ensure that effective efforts were made to encourage the participation of minorities on such committees.

### 9) Providing Assistance to Subrecipients

Title 49 CFR Section 21.9(b) states that if “a primary recipient extends Federal financial assistance to any other recipient, such other recipient shall also submit such compliance reports to the primary recipient as may be necessary to enable the primary recipient to carry out its obligations under this part.” Primary recipients should assist their subrecipients in complying with DOT’s Title VI regulations, including the general reporting requirements. Assistance shall be provided to the subrecipient as necessary and appropriate by the primary recipient.

Placer County currently has one subrecipient: The City of Auburn, Placer County will provide the following information to the subrecipient:

- a. Sample Notices to the public informing beneficiaries of their rights under DOT’s Title VI regulations, procedures on how to file a Title VI complaint, and Placer County’s Title VI Complaint form.
- b. Sample procedures for tracking and investigating Title VI complaints filed with subrecipients, and when Placer County expects subrecipients to notify Placer County of complaints received.
- c. Demographic information on the race and English proficiency of residents served by subrecipients. This information will assist subrecipients in

assessing the level and quality of service it provides to communities within its service area and in assessing the need for language assistance.

- d. Other data such as travel patterns and surveys obtained by Placer County that will assist subrecipients in complying with Title VI.

### 10) Monitoring of Subrecipients

In accordance with 49 CFR 21.9(b), and to ensure that subrecipients are complying with the DOT Title VI regulations, primary recipients must monitor their subrecipients for compliance with the regulations. Importantly, if a subrecipient is not in compliance with Title VI requirements, then the primary recipient is also not in compliance.

Placer County currently has one subrecipient: For the City of Auburn Placer County will monitor the following to ensure compliance by the subrecipient:

- a. Document Placer County’s process for ensuring that the City of Auburn is complying with general reporting requirements of FTA Circular 4702.1B
- b. Obtain a copy of the Title VI program from the subrecipient jurisdictions.
- c. At the request of FTA, in response to a complaint of discrimination, or as otherwise deemed necessary by Placer County, the County shall request that the City of Auburn verify the level and quality of service is provided on an equitable basis.

### 11) Determination of Site or Location of Facilities

Title 49 CFR Section 21.9(b)(3) states, “In determining the site or location of facilities, a recipient or applicant may not make selections with the purpose or effect of excluding persons from, denying them the benefits of, or subjecting them to discrimination under any program to which this regulation applies, on the grounds of race, color, or national origin; or with the purpose or effect of defeating or substantially impairing the accomplishment of the objectives of the Act or this part.” Title 49 CFR part 21, Appendix C, Section (3)(iv) provides, “The location of projects requiring land acquisition and the displacement of persons from their residences and businesses may not be determined on the basis of race, color, or national origin.” For the purposes of this requirement, “facilities” does not include bus shelters, as these are transit amenities and are covered in the System-Wide Service Standard Requirements in Attachment 5, nor does it include transit stations, power substations, etc. as those are evaluated during project development and the NEPA process. Facilities included in this provision include, but are not limited to, storage facilities, maintenance facilities, operations centers, etc.

The Placer County Department of Public Works will ensure that both environmental analysis and Title VI environmental justice requirements are incorporated into the scope of work for all transit facility projects covered under Title 49 CFR Section 21.9(b)(3).

- a. Placer County DPWF will complete a Title VI equity analysis during the planning stage with regard to where a transit project is located or sited to ensure the location is selected without regard to race, color, or national origin. Placer County DPWF will engage in outreach to persons potentially impacted by the siting of facilities. The Title VI equity analysis will compare the equity impacts of various



siting alternatives, and the analysis will occur before selection of the preferred site.

- b. When evaluating locations of transit facilities, Placer County DPWF will give attention to other facilities with similar impacts in the area to determine if any cumulative adverse impacts might result. Analysis will be done at the Census tract or block group level where appropriate to ensure that proper perspective is given to localized impacts.
- c. If Placer County DPWF determines that the location of the project will result in a disparate impact on the basis of race, color or national origin, Placer County determine if there is a substantial legitimate justification for locating the project there, and where there are no alternative locations that would have a less disparate impact on the basis of race, color or national origin. Placer County DPWF will demonstrate how both tests are met and will consider and analyze alternatives to determine whether those alternatives would have less of a disparate impact on the basis of race, color or national origin and then implement the least discriminatory alternative.

**No transit related facilities are currently being built by Placer County for PCT or TART.**

12) Requirement to Provide Additional Information on Request

Placer County will provide additional information, if at the discretion of FTA, more information is necessary to be provided in order to investigate a complaint or discrimination. Placer County will submit an updated Title VI program every three years to the FTA regional civil rights officer. The submittal of the Title VI program is done through FTA’s TEAM grant management system.

13) Requirements for Fixed Route Transit Providers

Chapter IV of FTA Circular 4702.1B discusses the additional reporting requirements for recipients of FTA funding (including their sub-recipients) that operate fixed route transit service, in order to ensure that the agency complies with DOT Title VI regulations. The requirements only apply to fixed route service, not demand response service. Per Circular 4702.1B definitions, “Fixed route refers to public transportation service provided in vehicles operated along pre-determined routes according to a fixed schedule.”

Placer County qualifies for a reduced level of Chapter IV reporting. If a fixed route transit provider does not operate 50 or more fixed route vehicles in peak service the transit provider is only required to set system-wide standards and policies. Please refer to Placer County’s System-Wide Service Standards (Attachment 4) and System-Wide Service Policies (Attachment 5).

14) Summary of Public Outreach since last Title VI submittal.

Each year Placer County participates with the Placer County Transportation Planning Agency in holding unmet transit needs workshops throughout the County to take a variety of public input regarding transit services. In 2014 there were 14 public workshops for unmet transit needs in Placer County. 138 comments were received from the public. There have not been any recent increases in fare revenue or any service reductions to warrant a public hearing. Placer County held public hearings in 2009 in relation to fare increases on both PCT and TART services. In 2010, a public hearing was held at the Board of Supervisors meeting in Lake Tahoe in regard to the potential reduction of service on TART, which did not take place. Placer County transit staffs are active participants in the BEST STEP, a local group of social service providers that meet monthly to discuss transit issues specific to their client needs. Placer County staff also participates actively on the Social Services Transportation Advisory Council. Placer County staff holds board member seats on the Truckee-North Tahoe Transportation Management Association, and on the Tahoe Transportation District Board. Placer County Staff is also a committee member on the North Lake Tahoe Resort Association Transportation & Infrastructure Committee. Staff has actively participated in public workshops and meetings held by all of these entities.

Attachment 1

Placer County DPWF/Transit Services  
Title VI Non Discrimination Policy  
With complaint procedure  
(Also Published in Spanish on Website)

**PLACER COUNTY DPWF/TRANSIT SERVICES  
TITLE VI NON DISCRIMINATION POLICY**

Placer County DPWF/Transit Services is committed to ensuring that no person is excluded from participation in, or denied the benefits of its transit services or programs on the basis of race, color or national origin as afforded under Title VI of the Civil Rights Act of 1964.

**Statement of Policy:**

Placer County DPWF/Transit Services, as a federal grant recipient, is required by the Federal Transit Administration (FTA) to conform to Title VI of the Civil Rights Act of 1964 and its amendments. Title VI of the Civil Rights Act of 1964 requires that no person in the United States, on the grounds of race, color or national origin be excluded from, be denied the benefits of, or be subjected to discrimination, under any program or activity receiving federal financial assistance. Presidential Executive Order 12898 addresses environmental justice in minority and low-income populations. Presidential Executive Order 13166 addresses services to those individuals with limited English proficiency.

The County is committed to enforcing the provisions of Title VI and protecting the rights and opportunities of all persons associated with the County or affected by its programs. The County's commitment includes vigorously enforcing all applicable laws and regulations that affect the County and those organizations, both public and private, which participate and benefit through our programs.

The County will take positive and realistic affirmative steps to ensure that all persons and/or firms wishing to participate in its programs are given an equal and equitable chance to participate.

The County's sub-recipients and contractors are required to prevent discrimination and ensure nondiscrimination in all of their programs, activities and services.

The Placer County Department of Public Works and Facilities is responsible for providing leadership, direction and policy to ensure compliance with Title VI of the 1964 Civil Rights Act in respect to its transit services. Any person(s) who feels that they have been discriminated against is encouraged to report such violations in writing to the County's Risk Management office:

**Placer County Department of Public Works and Facilities  
3091 County Center Drive, Suite 220  
Auburn, CA 95603**

## **Your Rights Under Title VI of the Civil Rights Act of 1964**

This document outlines the Title VI complaint procedures related to providing programs, services, and benefits. It does not, however, deny the complainant the right to file formal complaints with the California Department of Transportation, the Secretary of the US Department of Transportation, Equal Employment Opportunity Commission (EEOC), Federal Highway Administration (FHWA), Federal Transit Administration (FTA), or to seek private counsel for complaints alleging discrimination, intimidation or retaliation of any kind that is prohibited by law.

Title VI of the Civil Rights Act of 1964 requires that no person in the United States, on the grounds of **race, color or national origin** be excluded from, be denied the benefits of, or be subjected to discrimination, under any program or activity receiving federal financial assistance. Two Executive Orders extend Title VI protections to Environmental Justice, which also protects persons of low income, and Limited English Proficiency (LEP).

### **Title VI Complaint Procedure:**

1. Any person who believes that they have been subjected to discrimination may file a written complaint with the Placer County Department of Public Works. Federal and State law requires complaints be filed within one-hundred eighty (180) calendar days of the last alleged incident. The complaint procedure may be obtained from the Placer County web page at either [www.placer.ca.gov/transit](http://www.placer.ca.gov/transit) or [www.placer.ca.gov/tart](http://www.placer.ca.gov/tart). The complaint procedure may be requested via e-mail at [pct@placer.ca.gov](mailto:pct@placer.ca.gov) or [tart@placer.ca.gov](mailto:tart@placer.ca.gov). The complaint may be via telephone at 530-745-7591. The complaint procedure can be obtained by writing to Placer County Department of Public Works and Facilities, 3091 County Center Drive #220, Auburn, CA 95603.
2. The complaint must be completed on the form included in this document.

If the complainant is unable to write a complaint, Placer County Department of Public Works staff will assist the complainant. If requested by complainant, Placer County will provide a language or sign interpreter.

The complaint may be sent to the following address:

**Placer County Department of Public Works and Facilities  
3091 County Center Drive, Suite 220  
Auburn, CA 95603**

3. Complainants also have the right to complain directly to the Federal Transit Administration Office of Civil Rights, Attention Title VI Program Coordinator, East Building, 5<sup>th</sup> Floor – TCR, 1200 New Jersey Ave., SE, Washington, DC 20590. Complaints must be filed within one-hundred eighty (180) calendar days of the last alleged incident.

4. PLACER COUNTY DEPARTMENT OF PUBLIC WORKS will begin an investigation within fifteen (15) working days of receipt of a complaint.

5. PLACER COUNTY DEPARTMENT OF PUBLIC WORKS will contact the complainant in writing no later than thirty (30) working days after receipt of complaint for additional information, if needed. If the complainant fails to provide the requested information in a timely basis, PLACER COUNTY DEPARTMENT OF PUBLIC WORKS may administratively close the complaint.
6. PLACER COUNTY DEPARTMENT OF PUBLIC WORKS will complete the investigation within ninety (90) days of receipt of the complaint. If additional time for investigation is needed, the Complainant will be contacted. A written investigation report will be prepared by the investigator. This report shall include a summary description of the incident, findings and recommended corrective action.
7. A closing letter will be provided to the complainant. The respondent or respondent department will also receive a copy of the closing letter. Each will have five (5) working days from receipt of the report to appeal. If neither party appeals, the complaint will be closed.
8. If the complainant is dissatisfied with the written decision, he or she may file a written appeal with the Director of Public Works, 3091 County Center Drive #220, Auburn CA, 95603 no later than 15 days of the date of the mailing of the decision and must be signed by the complainant or by someone authorized to do so on the complainant's behalf. If deemed necessary, the Director of Public Works may seek assistance from the Placer County Risk Management Division for further investigation.

**Placer County Department of Public Works/Transit Services  
Title VI Civil Rights Complaint Form**

Title VI of the Civil Rights Act of 1964 states that “No person in the United States shall, on the ground of race, color, or national origin, be excluded from participation in, be denied the benefits of, or be subjected to discrimination under any program or activity receiving Federal financial assistance.” **If you believe you have been discriminated against, please provide the following information in order to assist Placer County in processing your complaint.**

**SECTION 1** (Please print clearly):

Name: \_\_\_\_\_

Address: \_\_\_\_\_

City, State, Zip Code: \_\_\_\_\_

Telephone Number: \_\_\_\_\_(Home) \_\_\_\_\_(Work)

Accessible format requirements? \_\_\_\_ (Large print) \_\_\_\_ (Audio) \_\_\_\_ (TDD) \_\_\_\_ (Other)

**SECTION 2**

Are you filing this complaint on your own behalf? \_\_\_\_ (Yes) \_\_\_\_ (No)

If you answered yes to this question, go to Section 3.

If not, please supply the name and relationship of the person for whom you are complaining:

Name: \_\_\_\_\_ Relationship: \_\_\_\_\_

Please explain why you have filed for a third party: \_\_\_\_\_

Please confirm that you have obtained the permission of the aggrieved party if you are filing on behalf of the third party. \_\_\_\_ (Yes) \_\_\_\_ (No)

**SECTION 3**

I believe the discrimination I experienced was based on (check all that apply):

\_\_\_\_\_ Race \_\_\_\_\_ Color \_\_\_\_\_ National Origin

Date, Time and Place of Occurrence: \_\_\_\_\_

Name (s) and Title(s) of the person (s) who I believe discriminated against me:

\_\_\_\_\_  
\_\_\_\_\_

The action or decision which caused me to believe I was discriminated against is as follows:

*(Please include a description of what happened and how your benefits were denied, delayed or affected):*

\_\_\_\_\_  
\_\_\_\_\_  
\_\_\_\_\_  
\_\_\_\_\_

# Placer County Title VI Program – Transit Services

2016/17 – 2018/19

Placer County Department of Public Works and Facilities

Please list any and all witnesses' names and phone numbers (if available):

---

---

---

What type of corrective action would you like to see taken?

---

---

---

## **SECTION 4**

Have you previously filed a Title VI complaint with this agency? \_\_\_\_ (Yes) \_\_\_\_ (No)

## **SECTION 5**

Have you filed this complaint with any other Federal, State, or local agency, or with any Federal or State Court? \_\_\_\_ (Yes) \_\_\_\_ (No)

If yes, check all that apply:

Federal Agency \_\_\_\_ Federal Court \_\_\_\_ State Agency \_\_\_\_ State Court \_\_\_\_ Local Agency \_\_\_\_

Please provide information about a contact person at the agency/court where the complaint was filed.

Name: \_\_\_\_\_ Title: \_\_\_\_\_

Agency: \_\_\_\_\_

Address: \_\_\_\_\_

Telephone Number: \_\_\_\_\_

You may attach any written materials or other information that you think is relevant to your complaint.

I believe the above information is true and correct to the best of my knowledge.

Signature and date required below:

\_\_\_\_\_  
Signature

\_\_\_\_\_  
Printed Name

\_\_\_\_\_  
Date

**Please submit this form in person at the address below or mail this form to:**

Placer County Department of Public Works  
3091 County Center Drive, Suite 220  
Auburn, CA 95603

**This notice is posted on buses, at key bus stops and at transit offices:**

**NOTICE:**

In order to comply with 49 CFR Section 21.9(d):

The County of Placer certifies that,  
No person on the basis of race, color, or national origin will be subjected to discrimination in the level and quality of transportation services and transit related benefits.

Additional information on the County’s obligations under this code can be obtained on the County website at <http://www.placer.ca.gov/Departments/Works/Transit.aspx> or by submitting a written request to Placer County Transit, 11460 F Ave. Auburn, CA 95603 or Tahoe Area Regional Transit, PO Box 1909 Tahoe City, CA 96145.

To file a complaint, filing instructions can be found on the County website at <http://www.placer.ca.gov/Departments/Works/Transit.aspx> or by requesting the form in writing from the **Placer County Department of Public Works and Facilities** office at, **3091 County Center Drive, Suite #220, Auburn, CA 95603.**

**AVISO:**

Con el fin de cumplir con 49 CFR sección 21.9 (d):

El Condado de Placer certifica que,  
Ninguna persona por motivo de raza, color o origen nacional será sometido a discriminación en el nivel y calidad del servicio de transportación y beneficios relacionados con transito.

Información adicional en las obligaciones del Condado bajo este código pueden ser obtenidas en la página web en <http://www.placer.ca.gov/Departments/Works/Transit.aspx> o al solicitar información por escrito al Placer County Transit, 11460 F Ave. Auburn, CA 95603 o Tahoe Truckee Area Regional Transit, PO Box 1909 Tahoe City, CA 96145.

Instrucciones para presentar un reclamo se encuentran en la página web <http://www.placer.ca.gov/Departments/Works/Transit.aspx> o al solicitar el formulario por escrito al **Placer County Department of Public Works, 3091 County Center Drive, Suite #220, Auburn, CA 95603.**



**Attachment 2**

**List of Transit-Related Title VI Investigations, Complaints and Lawsuits**

Per FTA Circular 4702.1B, “all recipients are required to prepare and maintain a list of any of the following that allege discrimination on the basis of race, color, or national origin”:

- Active investigations conducted by FTA and entities other than FTA
- Lawsuits; and
- Complaints naming the recipient

Placer County has not received Title VI Investigations, Complaints or Lawsuits. Below is the list that will be used for tracking these incidents:

**Investigations, Lawsuits and Complaints**

	<b>Date (Month, Day, Year)</b>	<b>Summary (Include basis of complaint: race, color, or national origin)</b>	<b>Status</b>	<b>Action(s) Taken</b>
<b>Investigations</b>				
1.	N/A			
2.	N/A			
<b>Lawsuits</b>				
1.	N/A			
2.	N/A			
<b>Complaints</b>				
1.	N/A			
2.	N/A			

### Attachment 3

## Public Participation Plan PLACER COUNTY (PCT) AND TAHOE TRUCKEE AREA REGIONAL TRANSIT (TART)

### POLICIES & PROCEDURES FOR **PUBLIC PARTICIPATION PROCESS**

#### **ARTICLE I, PURPOSE**

Pursuant to 49 USC Chapter 53, Section 5307 (d)(1)(I) Federal Transit Administration (FTA) grantees are required to develop a local process to solicit and consider public comment prior to a fare increase or major service reduction. In addition, FTA grantees must solicit public input and consider public comment for its charter services program and for its Federal civil rights program (Title VI of the Civil Rights Act of 1964, Equal Employment Opportunity, Disadvantaged Business Enterprise, and Americans with Disabilities Act). Public meetings are not a mandatory requirement; however, an opportunity for a public hearing must be given.<sup>1</sup> This Policy describes when an opportunity for a public hearing will be provided, how hearings will be conducted, and how the results of hearings will be considered in the decision-making process.

#### **ARTICLE II, BACKGROUND**

Placer County Transit (PCT and Tahoe Truckee Area Regional Transit (TART), henceforth referred to as “Placer County ” (County), welcomes and encourages citizen input into its service planning process. To achieve this end, County will strive for an open exchange of information and ideas between the public and transit decision-makers. The overall objective of the County’s public participation process is that it be proactive; provide complete information, timely public notice, full public access to key decisions, and opportunities for early and continuing involvement. By doing so, County hopes to build support among the public who are stakeholders in the transportation investments that impact their community. Placer County Provides transit services over a vast geographic area. Public workshops, meetings and hearings will be held in the location and forum most appropriate for the actions proposed. This includes meetings of the Board of Supervisors, Municipal advisory Committees, City Councils, The Placer County Transportation Planning Agency or Sacramento Area Council of Governments.

#### **ARTICLE III, FARE INCREASE AND MAJOR SERVICE CHANGES**

For the purpose of this Policy, a major service change” is defined as: 1) A 25% or greater reduction in either the service miles or the service hours of any established fixed-route or route segment, 2) A 25% or greater reduction in service area or service hours for complementary paratransit service, 3) The removal of greater than 25% of the bus stops on any established fixed-route segment 4) A 25% or

---

<sup>1</sup> For the purpose of developing its FTA transportation plans, programs and projects, Placer County will rely on the public participation process of the Placer County Transportation Planning Agency & Sacramento Area Council of Governments.

greater reduction in either the service miles or hours in any day service day of the week. The Board of Supervisors will approve all major service reductions and fare increases. Major service reductions entirely within a City or County other than Placer will require action of the appropriate jurisdiction prior to action of the Board of Supervisors. The County will provide the opportunity for public participation for major service reductions.

The County may temporarily change service levels to reflect emergency or other operating conditions without providing for public participation. Except in those situations where advanced notification is impractical, County will notify the public of the changes by posting notices in all County vehicles and other means designed to inform the public.

## **ARTICLE IV, CHARTER SERVICES PROGRAM**

There is no requirement to hold a public hearing for the Charter Bus services program. Placer County does not provide Charter bus service.

## **ARTICLE V, CIVIL RIGHTS PROGRAMS**

County must provide for public participation in assuring compliance with Federal civil rights programs as mandated by the FTA. It is the responsibility of the County to assure compliance with these programs as each mandated threshold is surpassed. See **Attachment A** for current threshold levels.

## **ARTICLE VI, POLICIES AND PROCEDURES**

### **Section 1 – Public Input**

While written comments will be encouraged, County staff will also chronicle verbal comments. County staff is required to consider each suggestion made in the public participation process, though County is not required to implement each suggestion.

County will provide forms for making written comments/suggestions on all buses and at the County Transit offices. Nonetheless, these forms need not be used to submit a suggestion or comment. The County Staff will furnish a summary of comments received and County staff's response to the Board of Supervisors.

### **Section 2 – Public Notices**

Each notice of an opportunity for a public hearing will be posted in all County buses, in the County passenger shelters, at Board Of Supervisors office, and in the Placer County Library. In addition, a notice will be published for two consecutive days in local newspapers of general circulation. Direct-mail notices will be sent to appropriate agencies that are deemed by County to be directly affected by or involved with the proposed action. A period of not less than 10 calendar days will be allowed for a written public hearing request. If requested, the date of the offered public hearing will be scheduled at the appropriate hearing board and noticed in the same manner as the opportunity notice. See **Attachment B** for a sample Notice of Public Hearing. A staff report that outlines each item under consideration will be available upon request and at the public hearing. Included in this staff report will

be a description of the proposed action, its purpose, any information and data relevant thereto, and will contain other information that is deemed relevant.

### **Section 3 – Joint Hearing With Other Jurisdictions**

For a public hearing which may involve the County and other City Departments or other public agencies, County will provide for joint hearings with the affected Departments/agencies at a mutually agreeable time and place. For any such joint hearings, the affected Departments/agencies will designate its representatives and advise County thereof.

### **Section 4 – Conduct of Public Hearing**

Public hearings will be designed to provide a means by which County may inform the public of the basis for proposed actions, and the hearings will not be designed to be adversarial in nature. The public hearing will be conducted in an orderly manner under the control of the chairperson or an assigned staff person. Minutes of the public hearing and written public testimony and a staff report will be available to the public for examination at County offices.

### **Section 5 – Recommendation to the Board of Supervisors**

Any subsequent recommendations to the Board of Supervisors will document input received from public hearings related to the proposed action.

**Attachment A, Public Participation Plan**

**Thresholds for Civil Rights Programs**

Title IV, Civil Rights Act of 1964

A Federal Transit Administration grantee that operates in an urbanized area with a population of 200,000 people or more is required to submit a Title VI Program assurance plan to FTA as described in FTA Circular 4702.1.

Equal Employment Opportunity

A Federal Transit Administration grantee that both employed 50 or more transit-related staff (including operational personnel) and received \$1 million in capital or \$250,000 in planning assistance in the previous fiscal year must submit a formal Equal Employment Opportunity plan as described in FTA Circular 4704.1.

Disadvantaged Business Enterprise

A Federal Transit Administration grantee that receives capital or operating assistance of \$250,000 or more (exclusive of vehicles) or \$100,000 in planning assistance must submit a written Disadvantaged Business Enterprise program as described in FTA Circular 4716.1A

Americans with Disabilities Act

No entity will discriminate against an individual with a disability in connection with the provision of transportation service.

**Attachment B, Public Participation Plan**

**PLACER COUNTY**

SAMPLE

**NOTICE OF PUBLIC HEARING**

**Re: \*\*PROPOSED ACTION\*\***

- I. NOTICE IS HEREBY given that, if written request(s) to hold a public hearing is received by Placer County within 10 days of the publication of this notice, a public hearing will be held by on **\*\*DATE\*\*** at **\*\*TIME\*\***, The purpose of this public hearing is to consider **\*\*PROPOSED ACTION\*\***.
- II. Placer County is the designated recipient of Federal funds apportioned to the County. As required by the Federal Transit Administration (FTA), Placer County will offer the opportunity for a public hearing to consider the **\*\*PROPOSED ACTION\*\***.
- III. The **\*\*PROPOSED ACTION\*\*** is published to afford affected citizens, private transportation providers, and locally elected officials an opportunity to examine its content and to submit comments regarding performance of the recipient and the **\*\*PROPOSED ACTION\*\***. If no requests are received, this **\*\*PROPOSED ACTION\*\*** becomes the recommended action.
- IV. Accommodations for those individuals with disabilities will be provided upon request. Please call Placer County Department of Public Works, at (530) 889-7500, at least three working days before the public hearing.
- V. Written comments should be forwarded to Transit Manager, Placer County Department of Public Works, 3091 County Center Drive, Suite 220, Auburn CA 95603, and postmarked no later than **\*\*DATE\*\***.
- VI. An Staff report outlining the proposed action will be available for public review at the public hearing, Placer County Department of Public Works offices after **\*\*DATE\*\***. If you cannot attend the meeting but wish to make comments, call the Department of Public Works Transit Manager, at (530) 889-7500. Please leave a recorded message if no one is available to speak to you personally.

Transit Manager

Placer County

**Attachment 4**  
**System-Wide Service Standards**  
**Placer County Transit & Tahoe Truckee Area Regional Transit**

1. Vehicle Load

Vehicle Load can be expressed as the ratio of passengers on-board to the number of seats on a vehicle. When maximum load factors are reported as being exceeded, the ridership will be monitored to determine if the load factor is being exceeded on a regular basis. If load factors are exceeded regularly, additional capacity will be added or routes or schedules will be modified.

Bus Load Factor Standards				
Vehicle Type	Seated Capacity	Standing Capacity	Total Capacity	Maximum Load Factor
25' Cutaway	18	5	23	1.3
30' Standard Bus	32	15	47	1.5
35' Standard Bus	35	18	51	1.5
40' Standard Bus	38	20	58	1.5
45' Commuter Coach	57	15	72	1.3

2. Vehicle Headway

Vehicle Headway is the amount of time between two vehicles travelling in the same direction on a given line or combination of lines. A shorter headway corresponds to more frequent service. Vehicle headways are measured in minutes; service frequency is measured in vehicles per hour. Headways and frequency of service are general indications of service provided along a route.

Placer County’s maximum headway is 60 minutes on all fixed routes with the following exceptions:

- a) The Taylor Road Shuttle is a deviated fixed route which operates on 120 minute headways due to the rural nature of the route.
- b) Placer Commuter Express operates four morning and four afternoon runs into and out of Downtown Sacramento. These routes are not scheduled to operate on any particular headway. Instead they are clustered in an attempt to optimize the match of service to demand within the amount of service offered. As of October 1, 2016 there are four morning runs arriving in Downtown Sacramento between 6:50 AM and 7:40 AM, and four runs departing Downtown Sacramento between 4:17 PM and 5:15PM.

3. On-Time Performance

Placer County fixed route buses shall depart no more than 5 minutes late from the scheduled departure time. The service shall strive to meet this standard 90% of the time. No bus shall depart a designated time point prior to its scheduled departure time 100% of the time. Placer County’s goal is to make 95% of all timed transfers. Periodically, time points may need to be changed to adjust for changing travel times.

4. Service Availability

Placer County fixed route transit services are primarily intercity or intercommunity routes spanning long distances. Routes are planned and designed to serve major corridors within Placer County including the Interstate 80, Highway 65, Highway 49, Highway 89, Highway 28 and Highway 267. The availability of routes is based on the ridership demand balanced with available resources.



**Attachment 5**  
**System-Wide Service Policies**  
**Placer County Transit & Tahoe Truckee Area Regional Transit**

FTA requires that all providers of fixed route public transportation develop qualitative policies for the following procedures. These policies are to be set by individual transit providers; therefore, these policies will apply to individual agencies rather than across the entire transit industry.

- Vehicle Assignment
- Transit Amenities

1. Vehicle Assignment refers to the process by which transit vehicles are placed into service in depots and on routes throughout the transit provider's system. Transit vehicles in Placer County will be assigned based on capacity and route characteristics. The 35' buses are the only fixed route buses suitable for the Placer County Transit Auburn-Light Rail route because they have the fuel capacity to operate 500 miles in one day. The two diesel powered buses are better suited for the Tahoe Truckee Area Regional Transit Highway 267 bus route due to their superior power over the 9% alpine grade. The 45' commuter diesel buses are used only on the Placer Commuter Express routes due to their capacity to carry 57 passengers. The 25' cut-away buses are used on the Taylor Road Shuttle and Auburn-Alta route because they deviate off route and have better turning radius and tree clearance than the larger buses. The remaining buses are assigned across routes as available. There is very little difference within the fleet in regard to passenger amenities or capacity.
  
2. Transit Amenities refer to items of comfort, convenience and safety that are available to the general riding public. Fixed route transit providers must set a policy to ensure equitable distribution of transit amenities across the system. This requirement applies after a transit provider has decided to fund an amenity. Transit amenities may include: seating (benches, seats at stops/stations); bus shelters; printed information (signs, system maps, schedules; digital equipment ie: NextBus software; Waste receptacles including trash and recycling). Placer County will place transit amenities throughout the system within Placer County. Placer County does not have decision making authority over the siting of physical transit amenities like passenger shelters within cities or adjacent Counties. Placer County will coordinate with all jurisdictions in which Placer County buses operate to encourage the proper placement of passenger amenities. Placer County will ensure that private transit providers under contract with the County make all vehicle passenger amenities are properly in use for the benefit of passengers.

Attachment 6  
Placer County Board of Supervisors Resolution  
Approved on October 25, 2016

Before the Board of Supervisors  
County of Placer, State of California

In the matter of:

Resolution No. 2016-202

Adopt a Resolution to approve the Placer County  
Department of Public Works & Facilities Title VI  
Civil Rights Program Policy for Placer County  
Transit and Tahoe Truckee Area Regional Transit

The following Resolution was duly passed by the Board of Supervisors of the County of  
Placer at a regular meeting held October 25, 2016, by the following vote on roll call:

Ayes: HOLMES, UHLER, MONTGOMERY, WEYGANDT

Noes: NONE

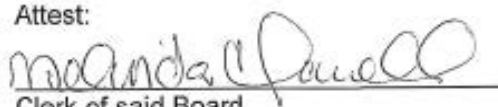
Absent: DURAN

Signed and approved by me after its passage.



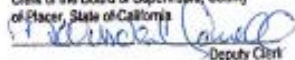
Chair, Board of Supervisors

Attest:



Clerk of said Board

THE FOREGOING INSTRUMENT IS A CORRECT  
COPY OF THE ORIGINAL ON FILE IN THIS OFFICE  
ATTEST

MEGAN WOOD  
Clerk of the Board of Supervisors, County  
of Placer, State of California  
  
Deputy Clerk

WHEREAS, Placer County is a recipient of Federal Transit Administration (FTA) funds;  
and

WHEREAS, The Department of Public Works and Facilities has prepared the Title VI  
Program Policy in accordance with FTA Circular 4702.1B; and

WHEREAS, The Title VI Program Policy is required to be submitted to FTA every three  
years;

BE IT RESOLVED, by the Board of Supervisors, County of Placer, State of California,  
that the Placer County Department of Public Works and Facilities Title VI Civil Rights  
Program Policy for Placer County Transit and Tahoe Truckee Area Regional Transit is  
hereby approved.